



BABYLON FIRE

Thursday, July 02, 2026, at 8:00 am

RED FLAG WARNING

Contact Fire Information: (435) 677-1958, Email: 2026.babylon@firenet.gov

<https://inciweb.wildfire.gov/incident-information/utmlf-babylon>

<https://www.facebook.com/mantilasalnationalforest>

Fire Statistics:

Start Date: June 26, 2026

Cause: Undetermined

Size: 70,795 acres

Containment: 0%

Structures Lost: 4

Location: 25 miles SW of Monticello, UT

Resources Assigned:

Total Personnel: 352

Crews: 5

Helicopters: 7

Engines: 13

Dozers: 1

Water Tenders: 5

Current Situation:

Firefighters tackling the Babylon Fire have adjusted their approach due to extreme fire behavior and dangerously rugged terrain. Recent intense activity near Steamboat Peak and the confluence of Peavine, Dark Canyon, and Rigg Canyons on the southwestern edge made it unsafe for crews to continue fighting the flames directly at the fire's edge.

Instead, firefighting crews are shifting to an indirect strategy. They are building a large "containment box" farther away from the fire, using natural landscape features and existing roads to stop its advance. As part of this plan, crews are preparing Elk Ridge Road and County Road 136 (west of Monticello) to serve as primary containment lines. Additionally, structure protection is underway in the Needles Area, where firefighters are proactively clearing a 10-foot defensive buffer around 34 homes and buildings to safeguard them from the approaching fire.

Community Meeting:

This evening, Great Basin Team 2 and local agency representatives will hold a community meeting to provide residents information and an overview of the fire. For those unable to attend in person, it will also be streamed live on Facebook @<https://www.facebook.com/mantilasalnationalforest>

WHERE: Utah State University Blanding Arts & Events Center (BAEC) 576 W 200 S, Blanding, UT 84511

WHEN: Thursday, July 02, 2026 at 6:00 pm.

Weather and Fire Behavior:

A dangerous weather pattern with a Red Flag Warning is currently driving low humidity and high winds, but fire managers are specifically preparing for a critical wind shift on Friday and Saturday. This upcoming shift will introduce a strong western wind component expected to push the fire eastward toward the Monticello area and critical infrastructure atop Abajo Mountain. To protect community assets ahead of this wind shift, Great Basin Team 2 is aggressively increasing resources, including two dedicated structure protection groups to operate north and south of Monticello.

Evacuations and Closures:

Due to active operations from the Babylon Fire, extensive public land closures are in effect to ensure public and firefighter safety. Closed areas include all Forest Service lands, roads, and trails within the Monticello Ranger District of the Manti-La Sal National Forest, as well as The Needles District of Canyonlands National Park. Additionally, the Bureau of Land Management has closed all managed lands west of Harts Draw Road, extending north through the Indian Creek Corridor to Indian Creek Falls, including Shay Mesa, Beef Basin, Dark Canyon, and Sweet Alice. The public is advised to completely avoid the Monticello Ranger District and stay away from all BLM and Forest Service lands south of Highway 211, west of Highway 191, and north of Highway 95. The closures above and future updates can be found on the Babylon Inciweb page:

<https://inciweb.wildfire.gov/incident-information/utmlf-babylon>

Great Basin Incident Management Team #2

For more information on this and other fires, visit <https://inciweb.wildfire.gov/>.



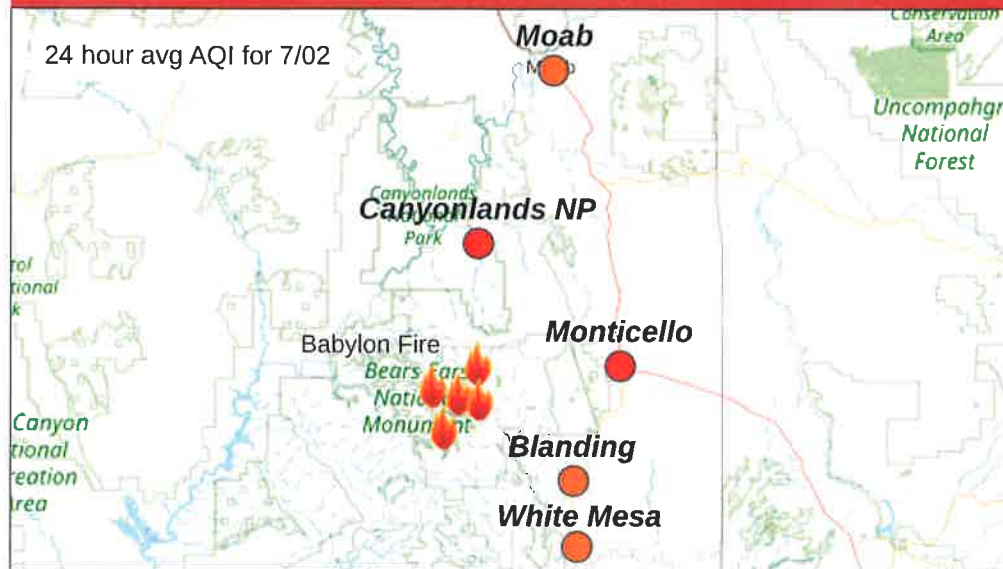
SMOKE OUTLOOK

SE Utah – Babylon

7/02 - 7/03

ARA: John Pendergrast, pendergrast01@gmail.com, and Nathan Santo Domingo (t), nathan.santodomingo@dnr.wa.gov
Issued: 07:42 MDT 7/02/26
Interagency Wildland Fire Air Quality Response Program

LOCAL ADVISORY: Red Flag Warning ([more info](#))



FIRE

The **Babylon** fire is currently estimated at 79,795 acres and is 0% contained. Fire activity for the **Babylon** fire is expected to remain high.

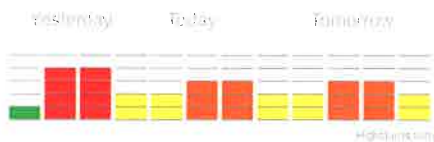
SMOKE

Fire activity on the Babylon Fire will be active once again Thursday afternoon. Southwest winds will shift to a more west-southwest direction in the evening. In Monticello, air quality may reach UNHEALTHY levels as soon as late evening, with VERY UNHEALTHY conditions possible overnight. In Moab and at Canyonlands NP, expect smoke to increase as fire activity increases this afternoon. The AQI may reach UNHEALTHY levels in Moab this afternoon but should improve in the evening as the wind shifts. In Blanding and White Mesa, air quality will improve to GOOD in the afternoon but is likely to return to UNHEALTHY FOR SENSITIVE GROUPS overnight through early Friday morning.

SPECIAL STATEMENT

A Red Flag Warning is in effect from 12:00 PM to 8:00 PM Thursday.

Moab Smoke will increase in the afternoon as fire activity increases but should improve late in the day and overnight.



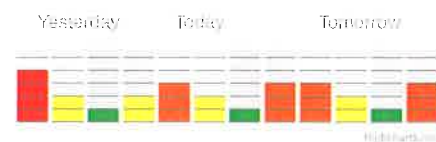
Monticello Smoke will increase late evening through the overnight hours with improvement during the afternoon.



Blanding Smoke will improve during the day but increase late in the evening as smoke settles.



White Mesa Smoke will improve during the day but increase again overnight as smoke settles.



Canyonlands NP Smoke will increase through the morning as fire activity increases with some improvement in the evening.



AIR QUALITY INDEX

- Hazardous (H)
- Very Unhealthy (VU)
- Unhealthy (U)
- Unhealthy for Sensitive Groups (USG)
- Moderate (M)
- Good (G)

ACTIONS TO PROTECT YOURSELF

- Everyone should avoid any outdoor activity
- Everyone should avoid all physical outdoor activity
- People within Sensitive Groups should avoid all physical activity
- People within Sensitive Groups should reduce prolonged or heavy exertion
- Unusually sensitive individuals should consider limiting prolonged or heavy exertion
- None

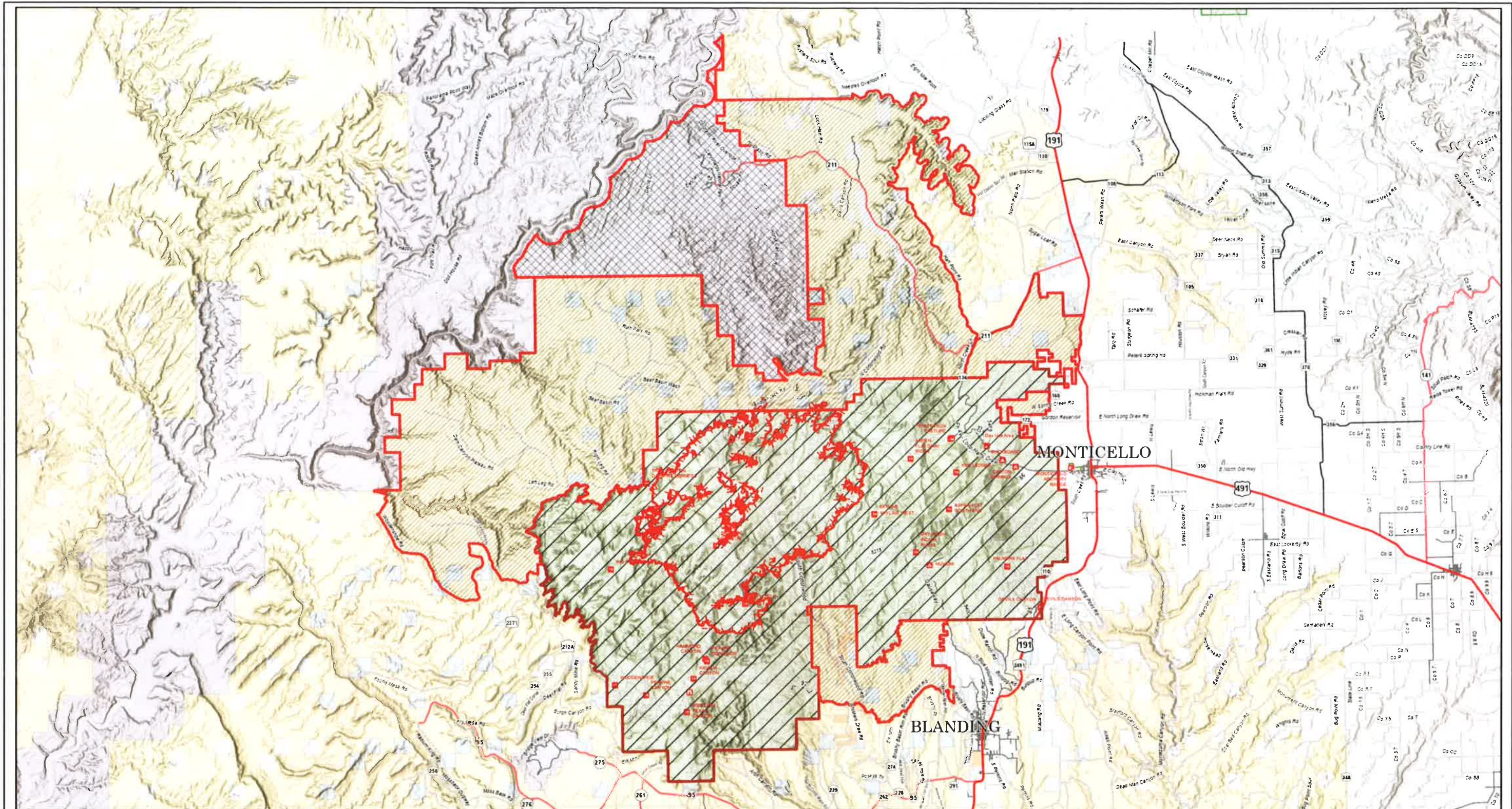
LEARN MORE



VIEW ONLINE FOR MORE INFORMATION:

<https://www.wildlandfiresmoke.net>

Disclaimer: This forecast is based on fine particulates only; ozone is not included. Forecasts may be wrong; use at own risk. Use caution as conditions can change quickly. See your health professional as needed. Smoke sensitive groups should take appropriate precautions.



Public Information

Babylon
 UTMLF-005112
 07/02/2026 Day
 79,795 acres at 07/1/2026 2300hrs
 0 1 2 4 6 8 10 12 14 16 18
 Miles
 1:400,000 | R15T | 7/2/2026 07:27
 Acres from IR
 North American 1983 Datum, Lat/Long Grid



- | | | | |
|--|--|--|---|
|  National Park Closure |  Primary Highway |  Paved Road |  BIA/Tribal |
|  Bureau of Land Management Closure Order UT-CYD-2026-02 |  Secondary Highway |  Gravel Road |  NPS |
|  Forest Service Closure Order 04-10-26-05-0 |  Primary Paved |  Dirt (Not Paved) |  State |
|  Uncontained Fire Edge |  Secondary Paved |  Road, Not Maintained for Passenger Car |  Private |
| |  County Road (Dirt) |  Forest Service Lands BLM |  City/County/Local |
| |  Secondary Dirt | | |