



SMOKE OUTLOOK

SE Utah – Babylon

7/03 - 7/04

ARA: John Pendergrast, pendergrast01@gmail.com, and Nathan Santo Domingo (t), nathan.santodomingo@dnr.utah.gov
 Issued: 07:54 MDT 7/03/26
 Interagency Wildland Fire Air Quality Response Program

LOCAL ADVISORY: Red Flag Warning



FIRE

The **Babylon** fire is currently estimated at 85,370 acres and is 0% contained. Fire activity for the **Babylon** fire is expected to remain high.

SMOKE

The Babylon Fire will remain active on Friday. Areas near and south of the La Sal Junction will see air quality improving through the afternoon. Overnight, smoke will once again settle along HWY 191. This includes Monticello, Blanding, and White Mesa. UNHEALTHY air quality is expected to develop again with areas of VERY UNHEALTHY air possible. Conditions will improve again Saturday afternoon. With winds out of the southwest, smoke concerns are lower in Moab and Canyonlands. The Air Quality Index may reach MODERATE levels late morning through early afternoon, perhaps with scattered areas of UNHEALTHY FOR SENSITIVE GROUPS, but air quality is expected to return to GOOD in the evening.

Moab Expect intermittent smoke in the late morning or early afternoon hours. Otherwise, the air quality will be GOOD.

Monticello Air quality will improve during the day, but smoke will increase overnight as smoke settles along HWY 191.

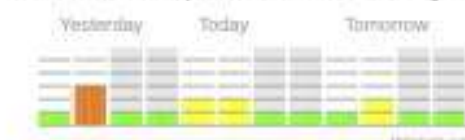


Blanding Air quality will improve during the day, but smoke will increase overnight as smoke settles along HWY 191.

White Mesa Air quality will improve during the day, but smoke will increase overnight as smoke settles along HWY 191.



Canyonlands NP Intermittent smoke is possible beginning late morning through early afternoon with improvement in the evening.



SPECIAL STATEMENT

A Red Flag Warning is in effect for the Babylon Fire from 12:00 PM to 8:00 PM on Friday.

AIR QUALITY INDEX

	Hazardous (H)
	Very Unhealthy (VU)
	Unhealthy (U)
	Unhealthy for Sensitive Groups (USG)
	Moderate (M)
	Good (G)

ACTIONS TO PROTECT YOURSELF

Everyone should avoid any outdoor activity
Everyone should avoid all physical outdoor activity
People within Sensitive Groups should avoid all physical activity
People within Sensitive Groups should reduce prolonged or heavy exertion
Unusually sensitive individuals should consider limiting prolonged or heavy exertion
None

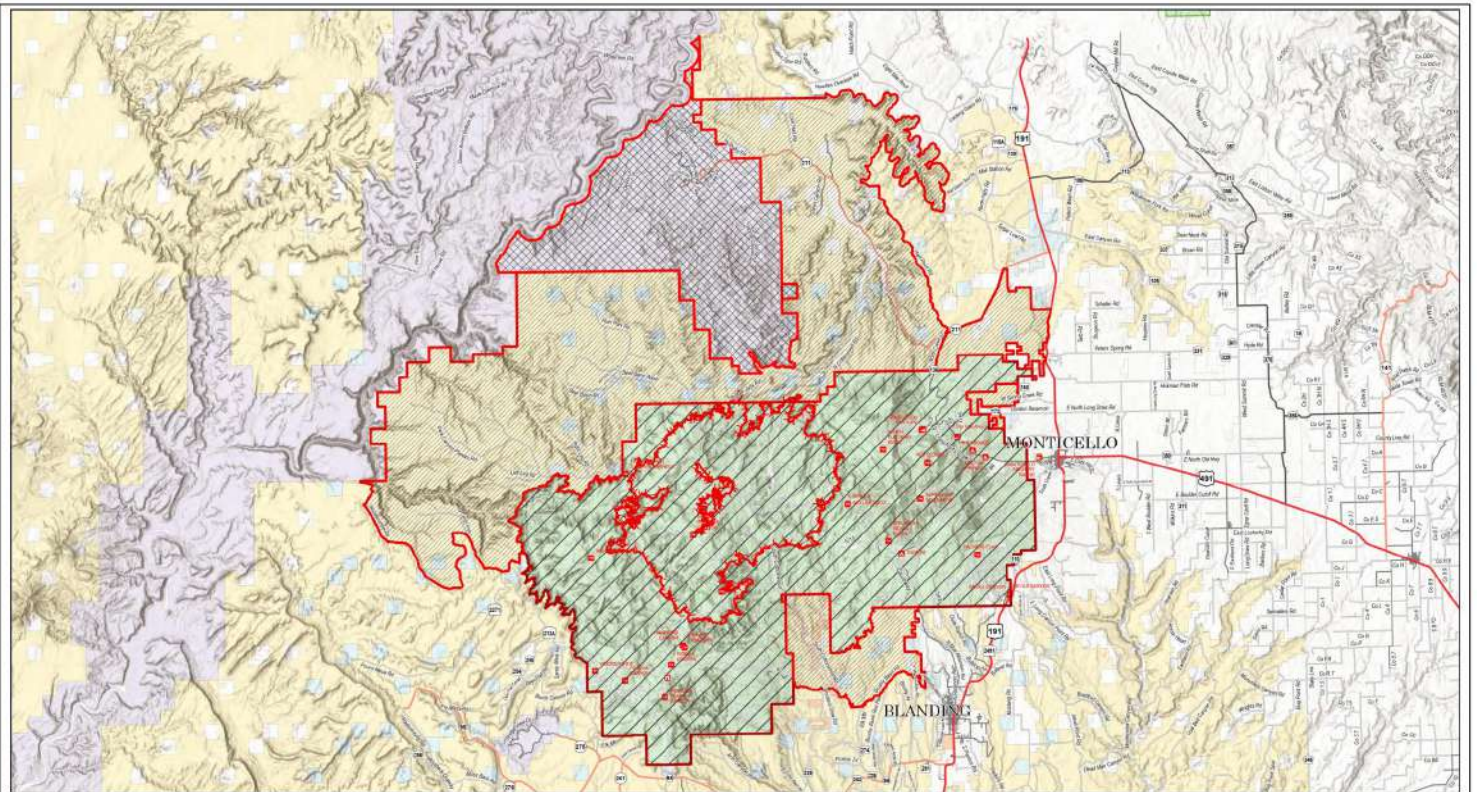
LEARN MORE



VIEW ONLINE FOR MORE INFORMATION

<https://www.wildlandfiresmoke.net>

Disclaimer: This forecast is based on fine particulates only; ozone is not included. Forecasts may be wrong; use at own risk. Use caution as conditions can change quickly. See your health professional as needed. Smoke sensitive groups should take appropriate precautions.



Public Information

Babylon
 UTMLF-005112
 07/03/2026 Day
 85,370 acres as of 07/3/2026 0000hrs
 0 1 2 4 6 8 10 12 14 16 18
 Miles
 1:408,000 10/11/21 17:20:28 D426
 ArcSWT from IT
 North American 1983 Datum, LatLong Cont



- | | | | |
|--|--------------------|--|-------------------|
| National Park Closure | Primary Highway | Paved Road | BIA/Tribal |
| Bureau of Land Management Closure Order UT-CYD-2026-02 | Secondary Highway | Gravel Road | NPS |
| Forest Service Closure Order 04-10-26-05-0 | Primary Paved | Dirt (Not Paved) | State |
| Uncontained Fire Edge | Secondary Paved | Road, Not Maintained for Passenger Car | Private |
| | County Road (Dirt) | Forest Service Lands | City/County/Local |
| | Secondary Dirt | BLM | |